

A low-angle, upward-looking photograph of several modern skyscrapers with glass facades, reaching towards a clear blue sky. The image is framed by large, overlapping geometric shapes in shades of orange and brown, which appear to be stylized representations of structural steel profiles or architectural elements. Some of these shapes contain smaller, lighter-colored triangles.

# **LIGHTWEIGHT STRUCTURAL STEEL PROFILES AND OTHER METAL CONSTRUCTIONS**

**LANK/META**

# Company

Established in 2002

Turnover – 9,1 m. EUR (2022)

Capacity – 500 tons/month

Export – 62%:

▲ Denmark, Norway, Sweden, Finland,  
Latvia, Estonia, USA, Belgium,  
Switzerland, Germany, Iceland, France,  
Great Britain, Ireland, Czech Republic,  
Namibia, Cayman Islands

Sales options:

- ▲ Factory deliveries – Lithuania
- ▲ Representatives – Estonia, Latvia
- ▲ Internet shop

**9 100 000**

EUR turnover (2022)

**60 000+**

reference buildings

**1000**

satisfied customers

**20**

countries

**21**

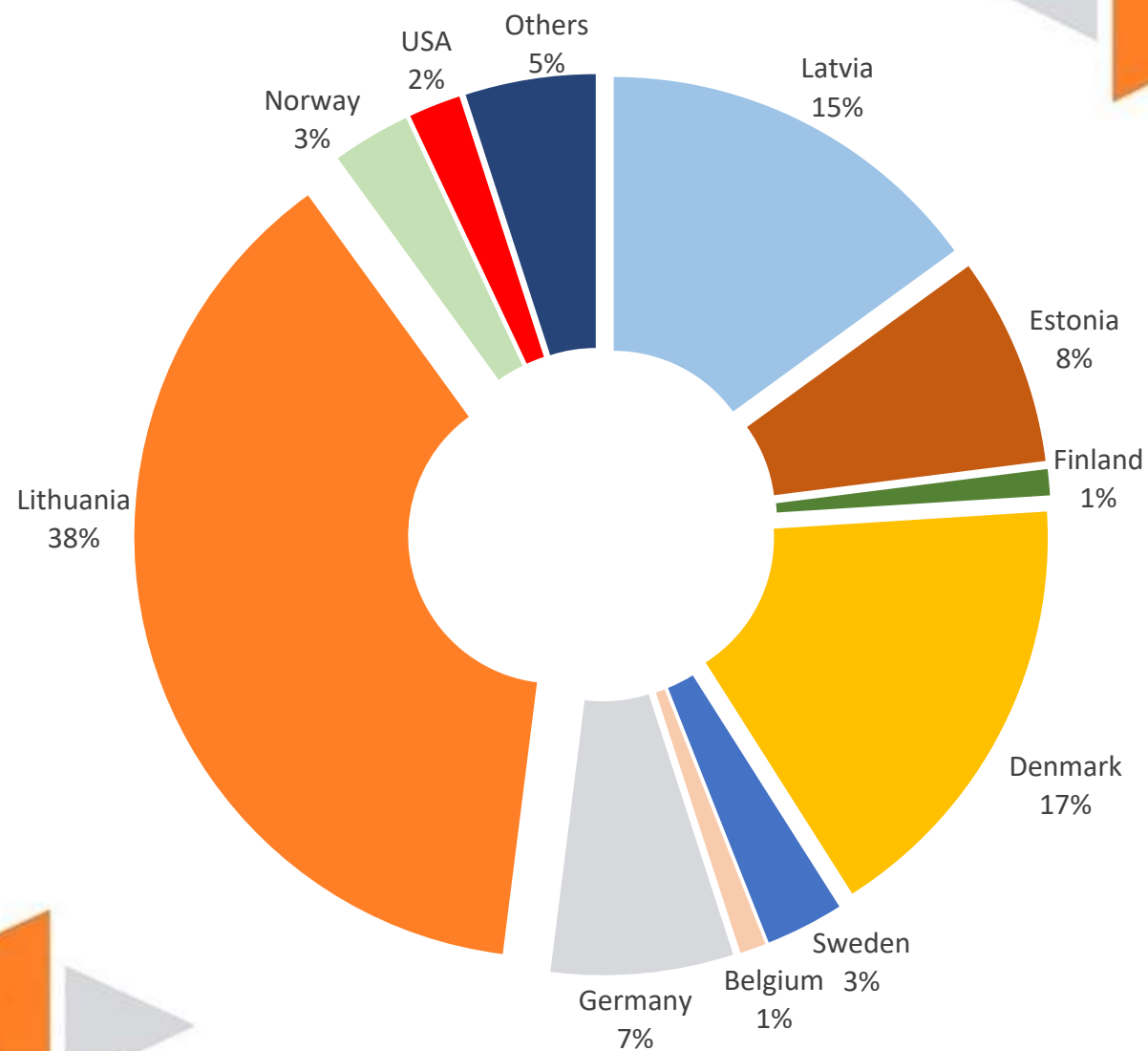
years in the market

**5**

days standard production time



# Customers



# Main group of products

## Lightweight structural purlines, girts and framing profiles

t mm	h mm	b mm	b1 mm	r mm	A cm <sup>2</sup>	A <sub>s</sub> m <sup>2</sup> /m	M kg/m	e <sub>x</sub> mm	I <sub>x</sub> cm <sup>4</sup>	X-X W <sub>x</sub> cm <sup>3</sup>	i <sub>x</sub> cm	I <sub>y</sub> cm <sup>4</sup>	Y-Y W <sub>y</sub> cm <sup>3</sup>	i <sub>y</sub> cm
0,80	50,00	40,00	40,00	0,80	1,02	0,26	0,26	12,71	4,58	1,83	2,11	2,19	0,65	1,32
1,00	50,00	40,00	40,00	1,00	1,27	0,26	0,26	12,81	5,65	2,26	2,11	2,19	0,80	1,31
1,20	50,00	40,00	40,00	1,20	1,51	0,26	0,26	12,81	6,68					1,31
1,50	50,00	40,00	40,00	1,50	1,88	0,26	0,26	12,81	8,18					1,31
2,00	50,00	40,00	40,00	2,00	2,47	0,26	0,26	12,81	10,53					1,30
2,50	50,00	40,00	40,00	2,50	3,04	0,26	0,26	12,81	12,71					1,29
3,00	50,00	40,00	40,00	3,00	3,60	0,26	0,26	12,81	14,71					1,28
0,80	100,00	40,00	40,00	0,80	1,18	0,36	1,39	9,33	9,70					1,29
1,00	100,00	40,00	40,00	1,00	1,47	0,36	1,39	9,33	11,99					1,29
1,20	100,00	40,00	40,00	1,20	1,75	0,36	1,39	9,33	14,23					1,29
1,50	100,00	40,00	40,00	1,50	2,18	0,36	1,39	9,33	17,49					1,29
2,00	100,00	40,00	40,00	2,00	2,87	0,36	1,39	9,33	22,68					1,28
2,50	100,00	40,00	40,00	2,50	3,54	0,36	1,39	9,33	27,55					1,27
3,00	100,00	40,00	40,00	3,00	4,20	0,36	1,39	9,33	32,13					1,26
0,80	150,00	40,00	40,00	0,80	1,42	0,45	5,18	8,24	21,89					1,25
1,00	150,00	40,00	40,00	1,00	1,77	0,45	5,18	8,24	27,13					1,24
1,20	150,00	40,00	40,00	1,20	2,11	0,45	5,18	8,24	32,27					1,24
1,50	150,00	40,00	40,00	1,50	2,63	0,45	5,18	8,24	39,80					1,24
2,00	150,00	40,00	40,00	2,00	3,47	0,45	5,18	8,24	51,90					1,23
2,50	150,00	40,00	40,00	2,50	4,25	0,45	5,18	8,24	63,43					1,22
3,00	150,00	40,00	40,00	3,00	5,10	0,45	5,18	8,24	74,41					1,22
0,80	200,00	40,00	40,00	0,80	1,62	0,45	5,18	8,24	36,89					1,20
1,00	200,00	40,00	40,00	1,00	2,02	0,45	5,18	8,24	45,76					1,20
1,20	200,00	40,00	40,00	1,20	2,41	0,45	5,18	8,24	54,49					1,20
1,50	200,00	40,00	40,00	1,50	3,00	0,45	5,18	8,24	67,34					1,19
2,00	200,00	40,00	40,00	2,00	3,97	0,45	5,18	8,24	88,06					1,19
2,50	200,00	40,00	40,00	2,50	4,92	0,45	5,18	8,24	107,95					1,18
3,00	200,00	40,00	40,00	3,00	5,85	0,45	5,18	8,24	127,01					1,17
0,80	250,00	40,00	40,00	0,80	1,82	0,45	5,18	8,24	56,94					1,16
1,00	250,00	40,00	40,00	1,00	2,27	0,45	5,18	8,24	70,70					1,16
1,20	250,00	40,00	40,00	1,20	2,71	0,45	5,18	8,24	84,26					1,16
1,50	250,00	40,00	40,00	1,50	3,38	0,45	5,18	8,24	104,25					1,15
2,00	250,00	40,00	40,00	2,00	4,47	0,45	5,18	8,24	136,62					1,15
2,50	250,00	40,00	40,00	2,50	5,54	0,45	5,18	8,24	167,83					1,14
3,00	250,00	40,00	40,00	3,00	6,60	0,45	5,18	8,24	197,90					1,14

## Features:

- ▲ Round, oval, triangle, square or rectangular holes
- ▲ Inclined or customized ends


## Specifications:

- ▲ **0,5 mm – 3,2 mm** Max length – 12 000 mm
- ▲ **3,5 mm – 6,0 mm** Max length – 4000 mm
- ▲ **7,0 – 12,0 mm** Max length – 2000 mm

## Raw materials:

- ▲ Galvanized steel **S350GD+Z275MA**
- ▲ Hot rolled mild steel **S235, S355, DC01**
- ▲ Stainless steel **AISI 304, 316**
- ▲ Aluminium **AW5754, AW5050**

# Insulated facades and roofs

 THERMO purlins

## THERMO Z, C, U profiles

- Max thickness – 2,0 mm
- Max length – 12 360 mm
- Round and oval holes
- Perforation – up to 15 lines



# Ventilated facades and roofs

**T-flex and Half Z (Z-flex)**

**L, H,  $\Omega$  (omega) profiles**

- Round and oval holes

**Brackets and straps**

- Round and oval holes





## Facade panels and cassettes

### Materials up to 3,0mm:

- Galvanized steel
- Aluminium
- CORTEN



# Framing structural systems

halls, warehouses, barns, farms, sheds

- Width – 6, 8, 10, 12 meters (without extra supports)
- Length – starting from 4 meters (dimension between columns)
- Height: side walls – 4 meters, ridge – 6 meters
- $\Omega$  girts (2,5 mm thickness)
- $\Omega$  purlins (2,5 mm thickness)
- Double  $\Sigma$  profiles for columns (2,5 mm thickness)
- Connections between columns (M16)
- Walling and dead load cleats (3,2 mm and up to 12 mm thickness)
- Cantilever posts (12 mm thickness)





## Thermal deformation profiles for concrete floors

- Thickness – 2,5 mm
- Max length – 4000 mm
- Height – from 40 up to 300 mm
- Material – Galvanized steel S350GD+Z275

## Concrete floor profiles

- Thickness – 1,5 mm
- Max length – 4000 mm
- Height – from 40 mm up to 150 mm
- Material – Galvanized steel S350GD+Z275
- Round holes







## Steel profile fences

- Customized shapes
- Powder coating



# Services

## THERMOPANEL ASSEMBLY

**New >1000 m2 size premises**

- Thermopanel and other facade elements for commercial and residential building facades
- Construction and renovation projects in the USA.





# Services

## LASER CUTTING

### Prima Power / Salvagnini

- Sheet dimensions 2000 x 6000 mm
- Sheet thickness:
  - galvanized / hot rolled mild steel up to 20 mm
  - stainless steel up to 10 mm
  - aluminium up to 8 mm





# Services

## Punching EUROMAC

- thickness up to 4 mm
- perforations starting from  $\varnothing$  3 mm





The background of the slide features a close-up photograph of several layers of perforated metal sheets. The sheets are arranged in a way that shows the depth of the perforations. Overlaid on the image are several geometric shapes, primarily triangles, in shades of orange and brown. These shapes are arranged in a pattern that suggests movement or a layered structure. The overall aesthetic is industrial and modern.

## Services

### Perforation

- thickness up to 2 mm
- perforation up to 15 rows



# Services

## Unwinding of coils and cross-cutting with disk knives

- max weight of the coil – 10 tons
- thickness up to 3.2 mm



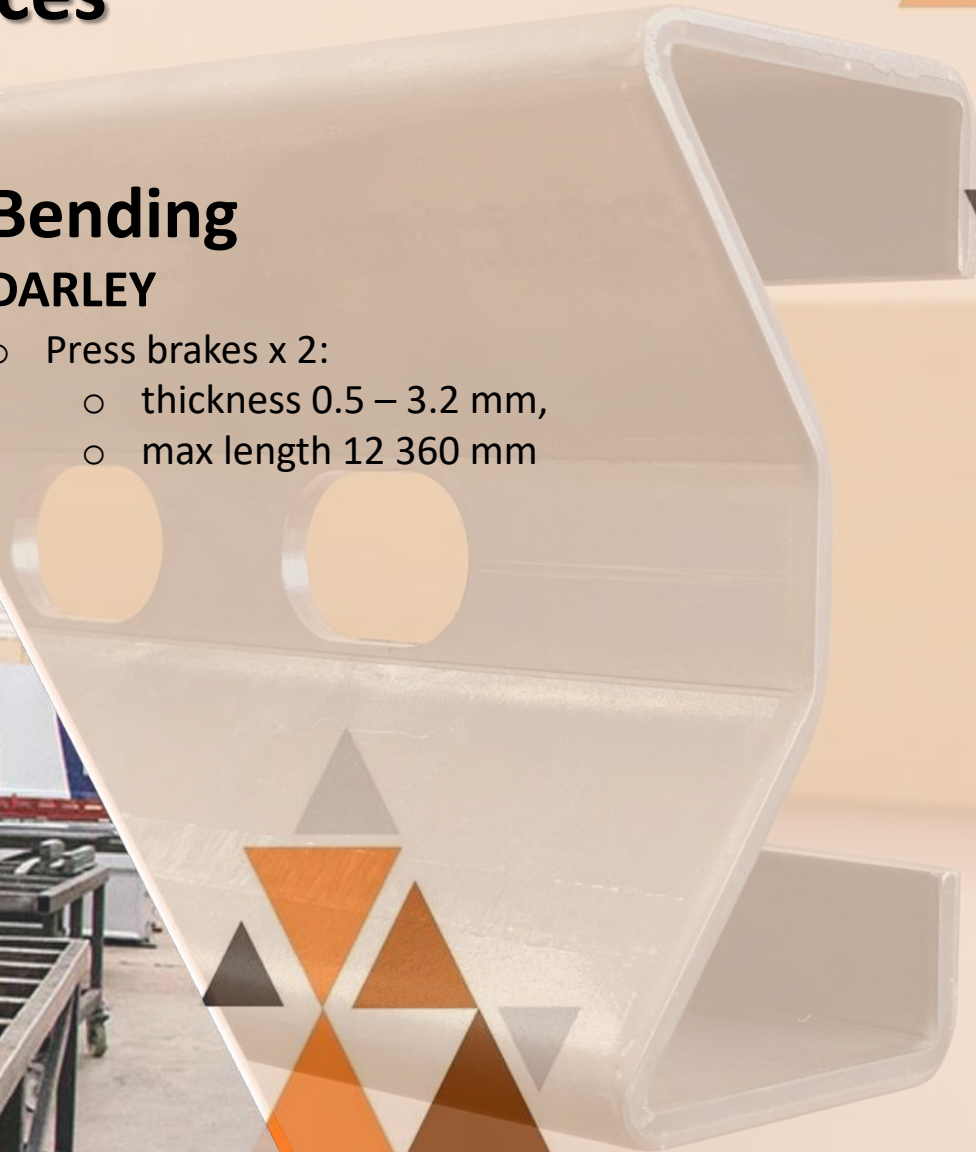


# Services

## Bending

### DARLEY

- Press brakes x 2:
  - thickness 0.5 – 3.2 mm,
  - max length 12 360 mm





# Services

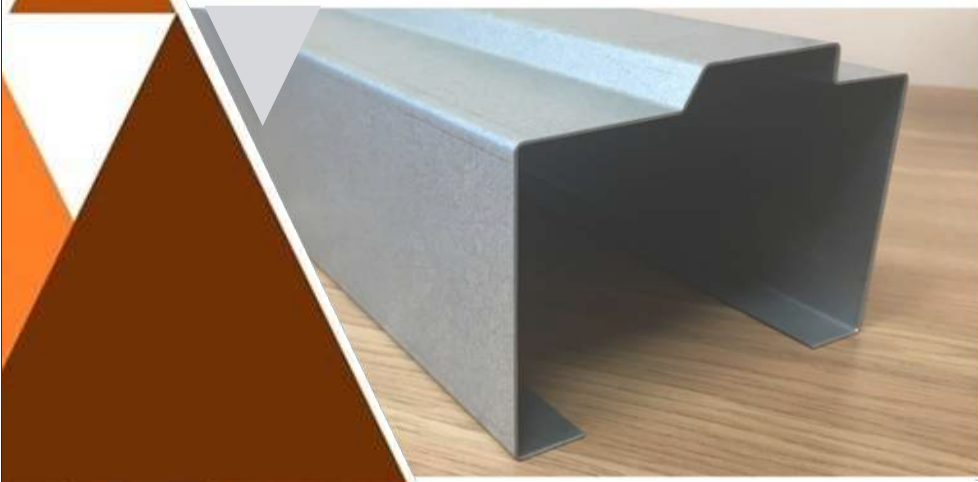
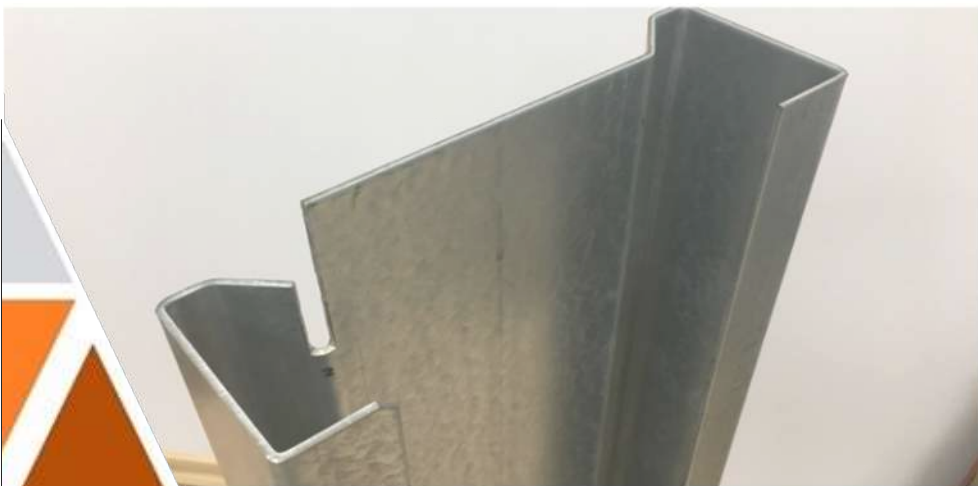
## Bending

### VIMERCATI / BOCHART

- Press brakes 1 250 mm and 2 500 mm:
  - thickness 0.5 – 2.0 mm,
  - max length 2 500 mm







# Services

## Bending

### CIDAN

- thickness 0.5 – 2.0 mm
- max length 4 000 mm





# Services

## Cutting

- Guillotine shears:
  - lenght up to 4000 mm,
  - thickness 10 mm





# Services

## Stamping

- Brackets for ventilated facades
- thickness up to 2 mm





# Services

## Grinding **NEW !!!**

- Dimensions 1350 x 6000 mm
- thickness up to 20 mm







## Services

### Welding

- aluminum
- hot rolled mild steel



# Our competitive advantage



## Specific dimensions

- **Market issue** – Standard sizes and dimensions
- **Our solution** – Bending operations with press brakes
- **Result** – Cost saving

## Production time

- **Market issue** – Standard order – 2 weeks or more
- **Our solution** – Standard orders – 3-5 days
- **Result** – Time saving

## High quality of raw materials

- **Market issue** – Products made of inappropriate raw materials for construction needs
- **Our solution** – Cooperating with trustful partners
- **Result** – Reached quality standards

## Delivery options

- **Market issue** – Producers just produce the products
- **Our solution** – Transportation units
- **Result** – Predictible delivery time

## ISO integrated management system

- **Market issue** – Environment, Safety and Health issues
- **Our solution** – Controlled processes by certified professionals
- **Result** – Long lasting relationships

## Certified products (EN standards)

- **Market issue** – Products with unknown origin
- **Our solution** – Orders are accompanied by declarations of conformity
- **Result** – Legitimate documentation





# Quality assurance

## ▲ Integrated Management System:

- ▲ ISO 9001:2008 (Quality)
- ▲ ISO 14001:2004 (Environment)
- ▲ OHSAS 18001:2007 (Safety and Health)

## ▲ Conformity of the factory production control (SPSC)

- ▲ EN 1090-1:2009 + A1:2011

## ▲ Gazele – fastest growing company

- ▲ 2006, 2007, 2008, 2009, 2014, 2015, 2016





# KEY Customers

- ▲ **HUGAAS Construction – Norway**  
Bernardas Matuliavičius - Production Manager  
Mobile: +370 614 31448, e-mail: [bernardas.matuliavicius@hugaas.lt](mailto:bernardas.matuliavicius@hugaas.lt)
- ▲ **MOLAND Byggevarer A/S – Denmark / Sweden**  
Henrik Danielsen - Purchasing Manager  
Mobile: +45 2222 2908, e-mail: [hd@moland.dk](mailto:hd@moland.dk)
- ▲ **IBO Handel – Denmark**  
Gudmundur Gudjonsson - General Sales Manager  
Mobile: +45 4092 4229, e-mail: [gg@k-a.dk](mailto:gg@k-a.dk)

- ▲ **Staticus – Sweden, Norway, UK**  
Darius Baranauskas - Procurement Manager  
Mobile: +370 686 76467, e-mail: [darius.baranauskas@staticus.lt](mailto:darius.baranauskas@staticus.lt)
- ▲ **Omeras GmbH – Germany**  
Mirko Gschwilm – Procurement Manager  
Mobile: +49 3771 5674 91, e-mail: [Mirko.Gschwilm@omerass.de](mailto:Mirko.Gschwilm@omerass.de)
- ▲ **AILE Grupa – Latvia**  
Māris Jansons – Supply Manager  
Mobile: +371 2876 9092, e-mail: [maris.jansons@ailegrupa.lv](mailto:maris.jansons@ailegrupa.lv)
- ▲ **S.B.C. / CONTIGA – Latvia / Norway**  
Viesturs Reimanis – Production Manager  
Mobile: +371 2653 6513, e-mail: [viesturs.reimanis@sbc.lv](mailto:viesturs.reimanis@sbc.lv)





# References



## Vuku and Trondheim halls (Norway)

- ✓ Z and C profiles with specific heights
- ✓ Galvanized plates with conical and oval holes

“

The product variety and technical support helps us to find the best solutions in our projects.

”

Bernardas Matuliavičius  
Production Manager, HUGAAS CONSTRUCTION



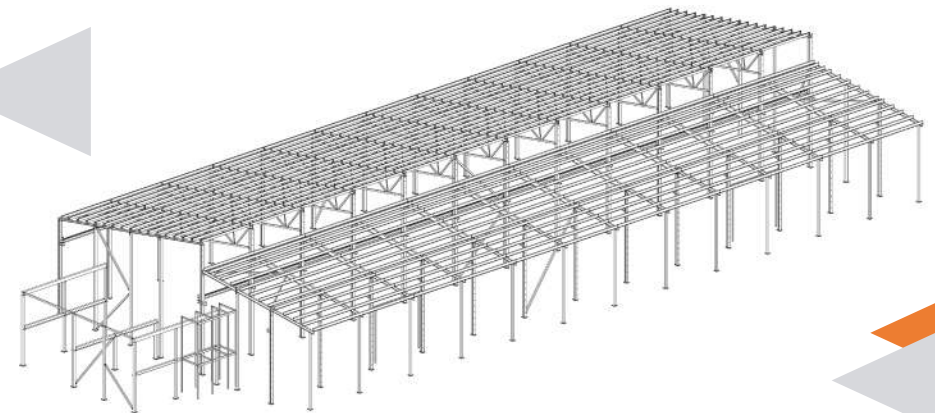


# References



**Production site of Tammihallit Oy  
(Köyliö, FINLAND)**

Termo Z purlines with inclined ends and  
specific perforations



“

LANKMETA is our long-standing partner because of top quality products and service that counts.

”

Viesturs Reimanis  
Production Manager, S.B.C. SIA (CONTIGA AB)



# References



**DTU – Technical University of Denmark  
(Lyngby, Denmark)**

Profiles and girts with different dimensions  
✓ +20 000 metres

“ Precision, quality and deliveries on time are basis for our long lasting and successful cooperation with Lankmeta. ”

**Gudmundur Gudjonsson**  
General Sales Manager, IBO Handel og industri A/S





# References



**Multi storey building (Tyreso, Sweden)**

Facade cassettes  
✓ 2 386 m<sup>2</sup>

“

Reliable and easy going  
partner, when time  
schedule is very tight.

”

**Artūrs Zuļģis**

Construction Manager, SKONTO PLAN LTD





# References



**Kiili Gümnasium (Tallinn, Estonia)**

Facade vertical blinds

✓ 2 880 m

“

Thanks to the new fixing system of profiles, the installation was 3 times faster than expected.

”

**Rene Niine**

CEO, FASSAADISTUUDIO OU





# References



**Multi storey building (London, UK)**

Facade perforated sheets  
✓ 1 824 m<sup>2</sup>

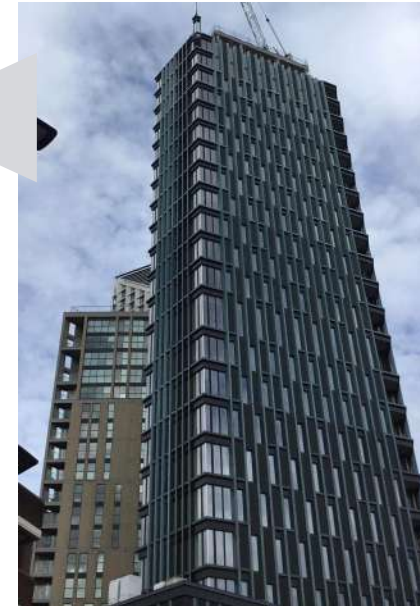
“

All materials are polished,  
with smooth edges and  
prepared for powder  
painting services.

”

**Vilnis Hercs**

PROCUREMENT MANAGER, SKONTO PLAN LTD







## Social activities and sponsorship

- ✓ Lithuania's Strongman Federation
- ✓ Panevėžys City Festivals
- ✓ Panevėžys Motocross Club "Sema"
- ✓ Panevėžys Offroadsters Club "Viesulas Bastūnas"





## Team building activities





# Our TEAM



**Managing Director**  
Erlandas Janėnas



**Head of Sales**  
Gintarė Plėtaite



**Project manager**  
Tomas Šipelis



**Manager**  
Petras Alšauskas



**Quality Manager**  
Kristina Kundrataitė



**Technologist**  
Robertas Serbentavičius



**Financial Director**  
Rima Samoilova



**Export / Development**  
Ainārs Šenings



**Non-standard Production Manager**  
Martynas Beinarauskas



**Manager**  
Gediminas Bielskis



**Production Manager**  
Ričardas Širvinskas



**Constructor**  
Aurimas Šimonis



**Marketing manager**  
Mykolas Šukys



**140** professionals





# **LANK** **ETA**

---



Trakiškio street 9,  
LT-35115 Panevėžys, Lithuania



+370 45 502 310



info@lankmeta.lt



www.lankmeta.lt



LinkedIn



Facebook



Youtube

